

Unchain My Heart

Ray Charles

2/13/2012

♩ = 124



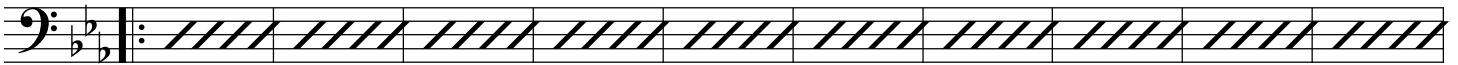
Cm

A^b7

Cm

Fm Cm

3



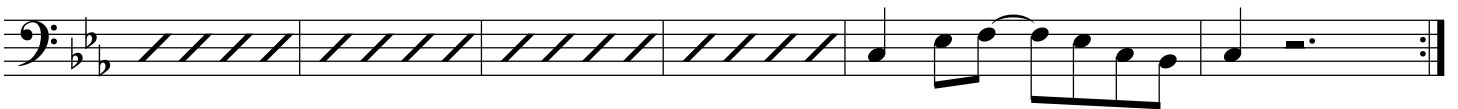
Fm

Cm

A^b7

G7

13



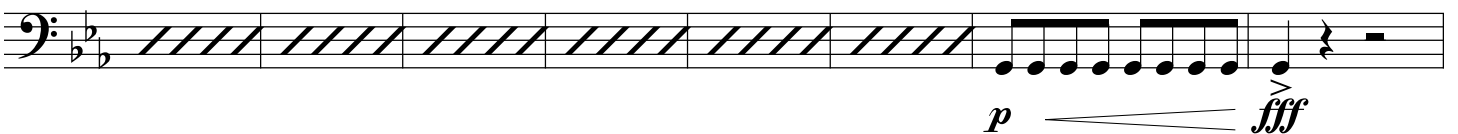
Fm

Cm

Fm

G7

19

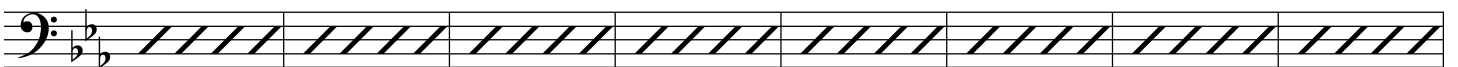


Cmin

A^b7

Cmin

27



Fm

Cm

Fm

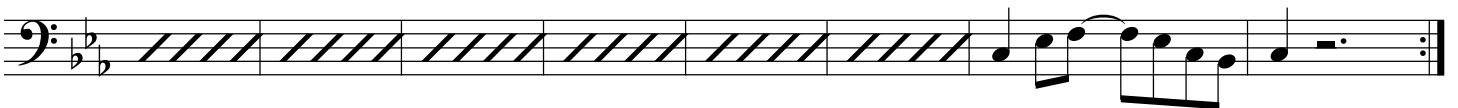
Cm

A^b7

G7

1.

35



43

rit.

2

Cm6

